

UFM-15

Clamp-on Flow Watch

The **UFM-15** clamp-on ultrasonic flow watch is widely used in industrial production processes for real-time flow measurement and monitoring.

This flow watch is unique in its functional design. The compact monitor helps you optimize your production process by continuously measuring and monitoring the flow. In just 2 to 3 minutes the installation will be completed and you can start measuring. The OLED display makes it easy to read data in low light.

The UFM-15 is suitable for different pipe diameters and materials: stainless steel pipe, carbon steel pipe, copper pipe, plastic pipe (PVC, PVDF, PPR, PPH, HDPE, etc.).



- Features**
- Non-invasive (external) measuring: No drilling, no obstructions, no maintenance.
 - No moving parts or pressure changes involved.
 - No professional product knowledge required : Installation and measurement by simple guide.
 - Wide range of pipe diameters : DN 15 – DN 50
 - Wide range of materials : stainless steel, carbon steel, copper, plastic (PVC, PVDF, PPR, PPH, HDPE, etc.)
 - Liquids : alcohols, chemical solvents, soft drinks, etc.

Components



Flow watch



Upper bracket



Bottom bracket



Connecting cable

Installation steps

01 Clean the pipe



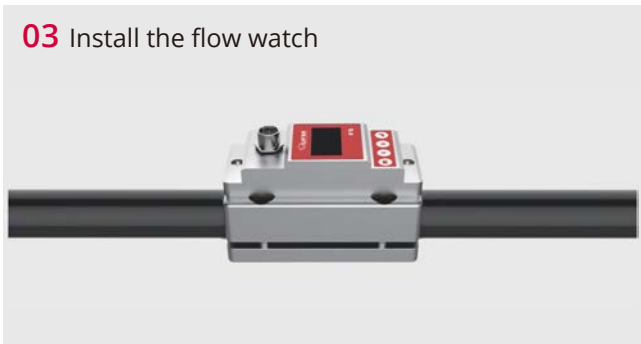
Make sure no dirt, paint, or other stains are on the surface of the pipe.

02 Install the bracket



Align flowmeter to the pipe position. Install screw on upper part of the bracket: The bottom part of the bracket will automatically connect with the top part. Tighten the 4 (M4) screws.

03 Install the flow watch



Position the flow watch on top of the upper bracket, and tighten 2 (M4) screws.

04 Connect the cable



Connect the cable to the socket and tighten up.

05 Run the flow watch



Please refer to the manual for a correct cable connection. Power on and check if $SQ \geq 50$. This indicates that the measurement can be considered stable.

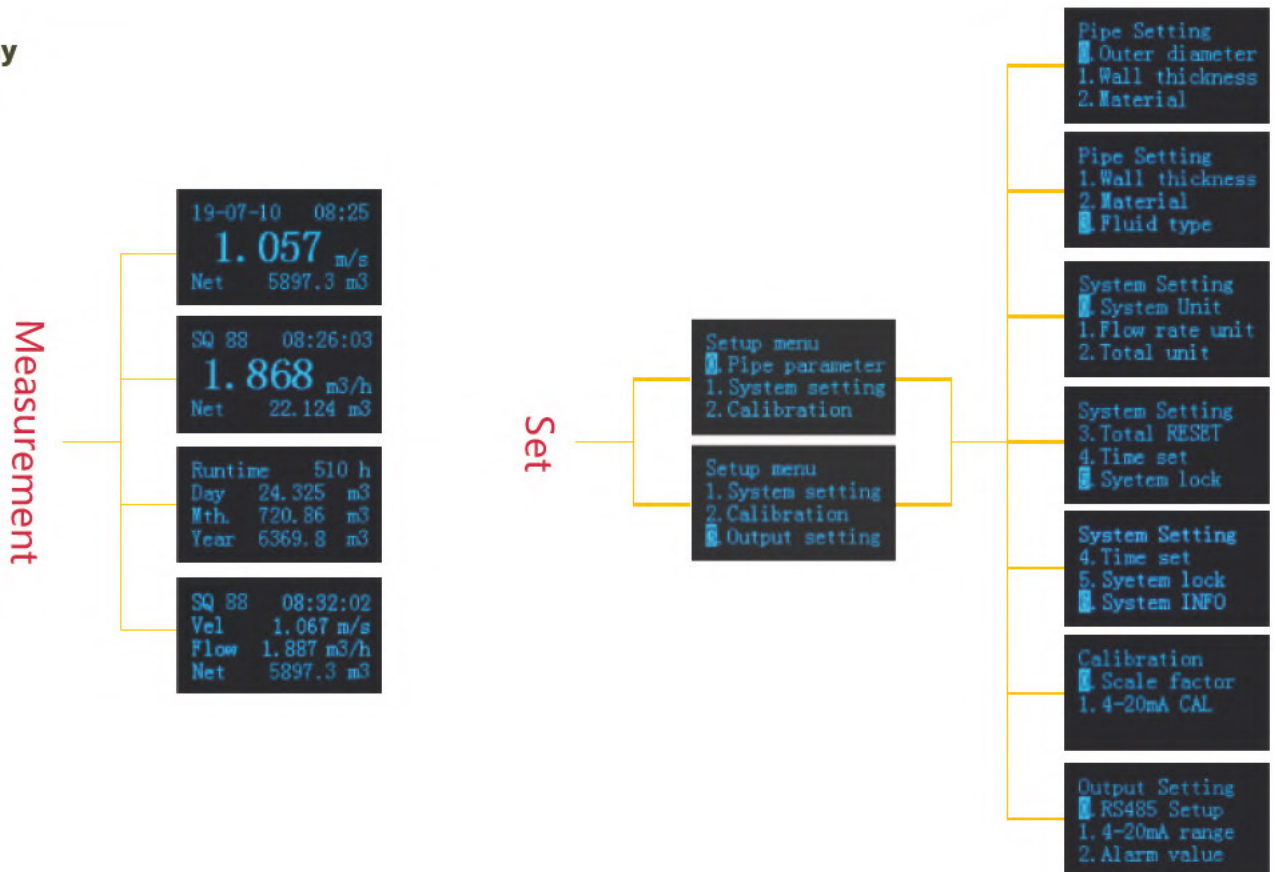
Setting

Special instructions:

The UFM-15 flow watch is designed for a wide range of pipe diameters and materials. It is set by default when you first obtain it. There is no need to reset the instrument.



Display



Performance

Product	Flow Watch
Model	F5
Flow range	0.1 m/s ~ 5.0 m/s
Accuracy	±2.0%
Repeatability	0.8%
Pipe size	DN15-DN50, 6 specifications in total
Data storage	Daily, monthly, and Annual. Flow Totalizer
Analog output	4 ~ 20mA, Maximum load: 600Ω
Alarm output	OCT, Upper and lower limit alarm function (optional)
Communication	RS485, support Modbus communication protocol
Power supply	24VDC
Cable length	1.8m
Keypad	Four light touch buttons
Screen	OLED 128*64 display screen
Units	Metric and imperial units are available, Cubic Meters(m3), Liters(L), USA Gallons(GAL)/hour, /min, Default unit setting: m3/h
Totalizer	Six bit digit
Piper material	Stainless steel pipe, carbon steel pipe, copper pipe, plastic pipe
Case material	Aluminum alloy
Environment temp	0°C - 50°C
Medium temp.	0°C - 50°C
Environment humidity	0-95% relative humidity, without condensation
IP Grade	IP54

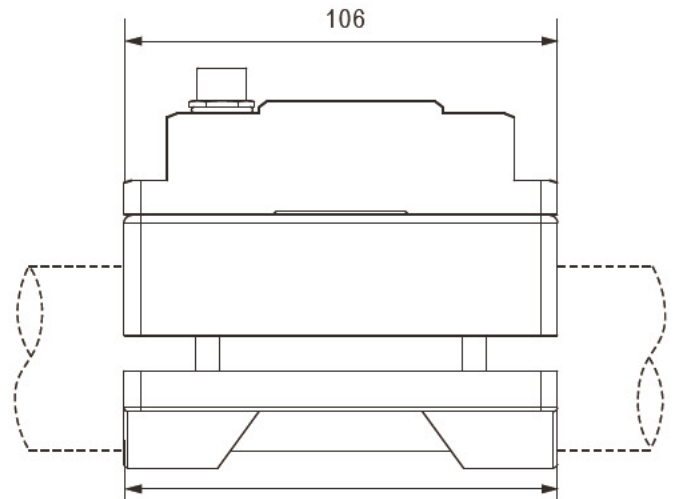
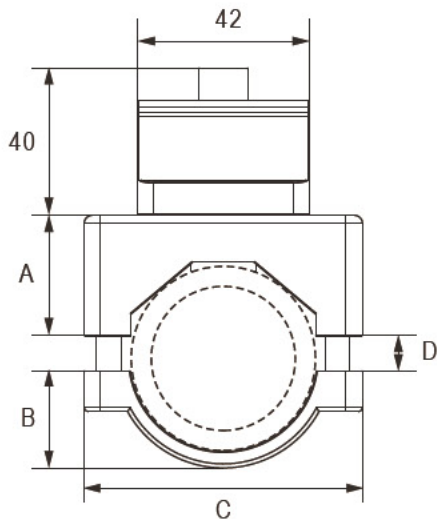
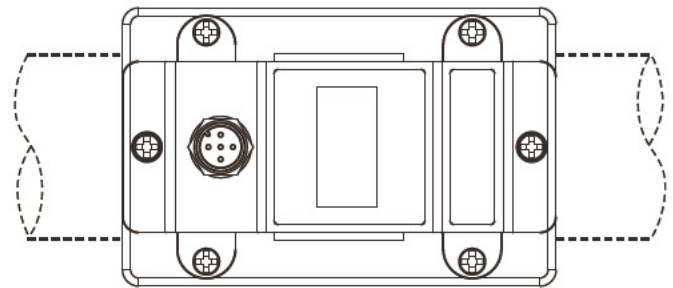
Weight (KG)	F5- Φ20	F5- Φ25	F5- Φ32	F5- Φ40	F5- Φ50	F5- Φ63
		0.54	0.54	0.52	0.60	0.58

Piping Specifications

Model	F5- φ20	F5- φ25	F5- φ32	F5- φ40	F5- φ50	F5- φ63
Pipe diameter	φ20	φ25	φ32	φ40	φ50	φ63
Pipe diameter	15mm	20mm	25mm	32mm	40mm	50mm
Nominal name	DN15	DN20	DN25	DN32	DN40	DN50
Popular name	1/2"	3/4"	1"	1.2"	1.5"	2"

Dimensions

Model	A (mm)	B (mm)	C (mm)	D(mm)	
				min	max
F5-φ 20	25	8	58	1.5/φ 20	8/φ 23
F5-φ 25	25	15	58	1.5/φ 25	4.5/φ 28
F5-φ 32	28.5	18.5	58	1.5/φ 32	4.5/φ 35
F5-φ 40	29.5	24	68	1.5/φ 38	8.5/φ 45
F5-φ 50	36	27	78	1.5/φ 48	8.5/φ 54
F5-φ 63	41	32	91	1.5/φ 58	7.5/φ 64



Inside connections

U-F-M b.v.

Argon 3
4751 XC Oud Gastel
The Netherlands

+31 (0)165 855 655
info@u-f-m.nl

www.u-f-m.com